

PORCHER

DESIGNS FOR THE BATH

GEOMETRIQUE SERIES

Installation Instructions for Glass Above Counter Basins



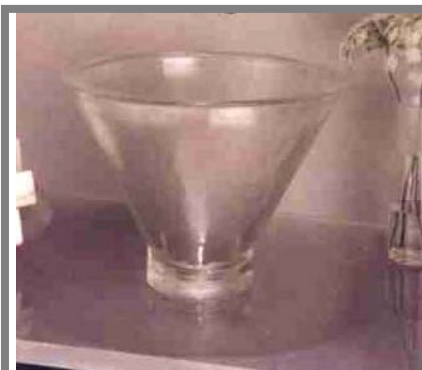
Circle - 32580



Rectangle - 32560



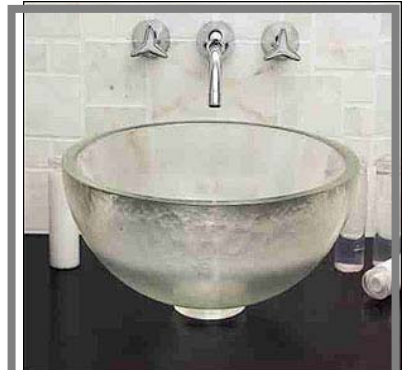
Square - 32600



Cone - 32500



Pyramid - 32520



1/2 Sphere - 32540

INTRODUCTION

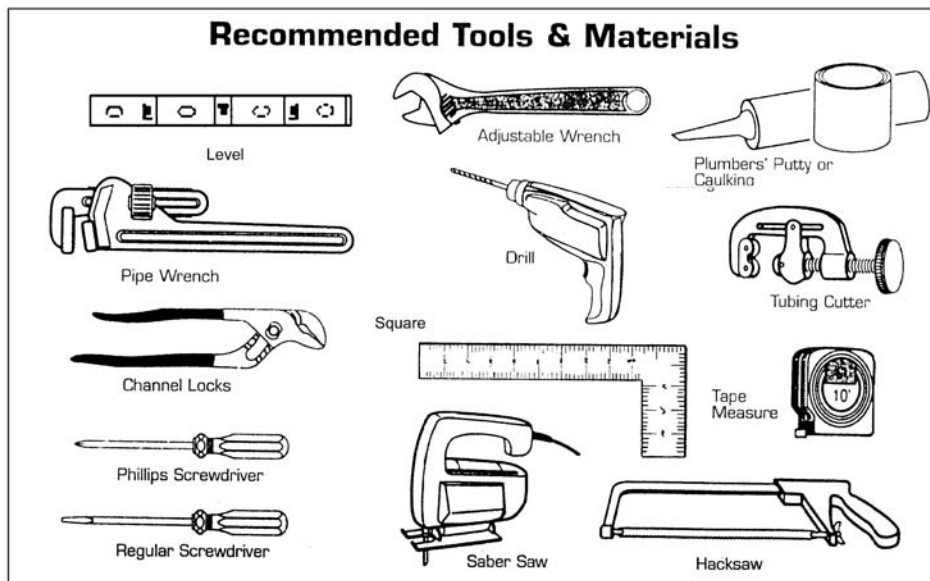
Thank you for selecting our Porcher product. To ensure that your installation proceeds smoothly, read these instructions carefully before you begin. Also, review the recommended tools and materials section. Carefully unpack and examine your new plumbing fixture.

**CAUTION: Glass lavatories are very heavy and fragile.
Use extreme care when handling.**

**ALL INSTALLATION PROCEDURES MUST COMPLY IN STRICT ACCORDANCE
WITH APPLICABLE LOCAL PLUMBING AND BUILDING CODES**

TOOLS AND MATERIALS REQUIRED

Most of the procedures require the use of common tools and materials, which are available from hardware and plumbing, supply stores. It is essential that the tools and materials be on hand before work is begun.



REPLACEMENT USE

When replacing an original unit be sure to shut off water supply *before* removing the unit or disconnecting water supply lines and drain fittings. Original supply lines and shutoff valves should be replaced and used with fittings and adapters to match the hookups on the replacement unit.

**USE TEFLON SEALANT TAPE ON PIPE THREADS
FOR WATERTIGHT CONNECTIONS!**

DRAINS INCLUDE WITH PRODUCT

RECTANGLE, PYRAMID, and SQUARE lavatories are packed with a required designer matching square grid drain (Part#85420) in 002 chrome finish. Polished Nickel (008) and Brushed Nickel (295) finishes are available for an additional charge.

CONE, CIRCLE, and ½ SPHERE lavatories are packed with an optional grid drain (Part#8536) in 002 chrome finish. Polished Nickel (008) and Brushed Nickel (295) finishes are available for an additional charge.

INSTALLATION PROCEDURES

Typical installation includes installation of faucet, connection of flexible water supply lines, attachment of basin to countertop, sizing and installation of drain to house water system.

INSTALLING BASIN

STEP 1. Using carpenter's square ensure that the countertop is level. Next, carefully position the lavatory or template in the desired location for the basin. Ensure you have provided proper clearance under the countertop for the faucet, supply lines, drain assembly and the structural parts of the cabinet. Mark desired drain and faucet location on countertop with pencil. Cut area indicated in countertop.

STEP 2. Drill a 1 3/4" (44 mm) hole at drain location. Drill a 1 3/8" (35 mm) hole at faucet mount location using provided template for exact positioning.

STEP 3. Position lavatory in place, centering it above the drain hole. Place clear silicone bead around perimeter of lav where lav meets counter.

STEP 4. Pre-assemble P-trap drain connections in accordance with manufacturer's instructions. Check that pop-up drain opens and closes properly when drain control is operated.

STEP 5. Connect supply lines to shutoff valves and securely tighten nuts.

DO NOT OVERTIGHTEN MOUNTING HARDWARE OR LAVATORY MAY BE DAMAGED!

STEP 6. Install faucet and drain in accordance with manufacturer's instructions. Hand tighten drain and add one quarter turn to allow the sink to expand and contract with changing water and room temperatures. If drain leaks, add another quarter turn. Repeat this process until leak stops. Do not over tighten to prevent stress cracks. Turn on water supply valves and water-test installation.

CARE AND MAINTENANCE

CAUTION: *Do not over-tighten.* The nut on the drain set should be finger tightened and then turned no more than one additional turn. In most cases, depending upon the drain set chosen, plumbers putty or a series of rubber gaskets will be used to create a water tight seal. The metal surfaces of the drain set should never come in contact with the glass (Doing so can cause stresses to build in the glass, which could later crack the glass). Over tightening also tends to press out or dislodge plumbers putty or distort rubber gaskets. The result could be a leaky drain set and an overstressed point in the glass.

Do not use harsh abrasives or caustic cleaners to clean fixture surfaces. A mild detergent, warm water, and a soft cloth will remove normal dirt and soap accumulations from fittings and surfaces. Rinse thoroughly after cleaning and polish with a soft dry cloth to restore original luster of material.

FIXTURE LIMITED WARRANTY

If inspection of this Porcher plumbing product, within one year after its initial purchase, confirms that it is defective in materials or workmanship, Porcher will repair or, at its option, exchange the product for a similar model. Variations in shading, veining, and texture which may result from natural characteristics of stone and as such are not defects and are not covered by this warranty.

This limited warranty **does not apply** to local building code compliance. Since local building codes vary considerably, the purchaser of this product should check with a local building or plumbing contractor to insure local code compliance before installation.

This warranty shall be void if the product has been moved from its initial place of installation; if it has been subjected to faulty maintenance, abuse, misuse, accident or other damages; if it was not installed in accordance with Porcher's instructions; or if it has been modified in a manner inconsistent with the product as shipped by Porcher.

Porcher's option to repair or exchange the product under this warranty does not cover any labor or other costs of removal or installation. **Porcher will not be responsible for any other incidental or consequential damages attributable to a product defect or to the repair or exchange of a defective product, all of which are expressly excluded from this warranty.** This limited warranty does not cover any liability for consequential or incidental damage, all of which are hereby expressly disclaimed, or the extension beyond duration of this limited warranty of any implied warranties, including those of merchantability or fitness for an intended purpose. (Some state or provinces do not allow the exclusion or limitation of implied warranties, so this exclusion may not apply to you).

This warranty gives you specific legal rights. You may have other statutory rights that vary from state to state or from province to province, in which case this warranty does not affect such statutory rights.

For service under these warranties, it is suggested that a claim be made through the contractor or dealer from or through whom the product was purchased, or that a service request (including a description of the product model and of the defect) be sent to the following address:

In the United States

Porcher
P.O. Box 6820
Piscataway, NJ 08855
ATT: Director of Consumer Affairs

In Canada

Porcher
2480 Stanfield Road
Mississauga, Ontario
Canada L4Y 1S2

In Mexico

Porcher
Planta Santa Clara
Via Morelos #330
Santa Clara Coatitla
Ecatepec de Morelos, 55440

For residents in the United States, warranty information may also be obtained by calling the following toll free number: (800) 359-3261